



# ALUCO™

Steel Look Collection

Interior • Exterior • Doors • Screens • Windows



# STEEL LOOK COLLECTION

## CONTENTS

<b>Aluco Exterior</b> Steel Look Windows and Doors.....	10	<b>Key Features</b> .....	22
<b>Aluco Interior</b> Doors and Screens.....	15	<b>Furniture Range</b> .....	28
<b>Aluco</b> Steel Look Bi-folding Door System.....	18	<b>Colour Range</b> .....	34



## OUR EXQUISITE BESPOKE WINDOWS DOORS AND SCREENS

The Aluco Collection offers exceptional steel look architectural glazing solutions, meticulously designed to transform your living space into something truly extraordinary.

From our iconic steel replica range of exterior windows and doors, through to our stunning interior doors and screens, and our versatile Bi-Folding for range 'Expanse', Aluco offer a unique solution to you and your home.



# ALUCO™

Steel Look Collection

### Attention To Detail

Every product in the Aluco Collection is designed and built specifically for each individual customer, handcrafted by our skilled craftsmen to your exact specification.

Our ethos is one of exceptional design and product performance, created to compliment the home and lifestyle of our customers. We believe in producing architectural solutions that will delight customers now, and from years to come.



## Designing Spaces to Enhance Your Home

Aluco have an exceptional reputation, where attention to detail and superb British craftsmanship is second to none.

We specialise in the design and manufacture of iconic steel effect windows, doors and screens covering both interior and exterior applications, for truly luxe living.

The Aluco Collection is available in an extensive selection of colour and finish options, including a stunning range of traditional and contemporary furniture and ironmongery styles and designs to compliment your home.



# DISTINCTIVE DESIGN



# THE SUBTLE DEGREE OF DIFFERENCE



## Creating Lasting Impressions Through Interior Design

Attention to detail is at the core of the Aluco experience. Our range of exceptional windows and doors are designed to ensure every detail is captured.

From slim and equal glass sightlines to maximise glass area and provide uniform appearance to folding doors and colour suited furniture to seemingly match your windows and door frames, dual colour finishes to allow different internal and external designs and handles designs to suit every room in your home. All can be tailored into every Aluco product to suit your needs.





ELEGANT  
LUXURY  
DISTINCTIVE  
ICONIC  
HERITAGE  
INDUSTRIAL  
TIMELESS  
ART DECO  
STEEL LOOK

ALUCO™  
Steel Look Collection



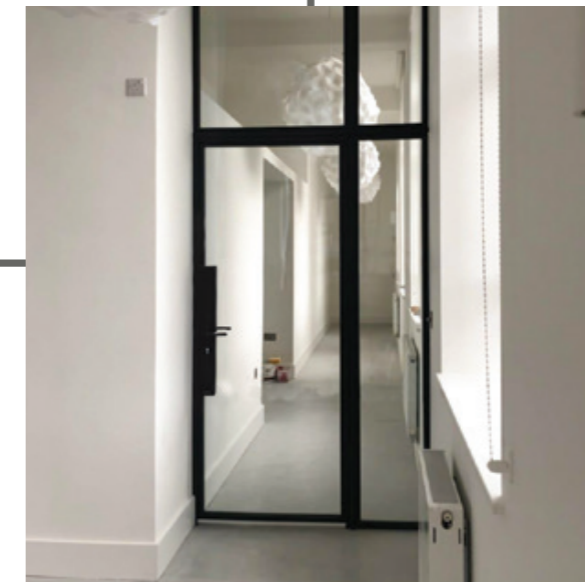
ALUCO STEEL LOOK

DOORS &  
SCREENS &  
WINDOWS



**Timeless Design,  
Advanced Performance**

Our signature ALUCO collection is inspired by traditional, industrial steel windows and the highly sought after Scandi-style. Combining cutting edge technology with artisan designs and craftsmanship, we create striking but minimalist metal frames, featuring slim sightlines and the iconic grid-like designs, with styles that range from classic heritage to contemporary. These versatile windows and doors have the ability to completely transform your home, letting in more light and creating luxury living spaces.



**BESPOKE  
FLOATING  
LOCK**

To further enhance the Aluco Steel Look collection a 'Floating Lock' design is available on all interior and exterior single and double doors. This unique design enables a full sheet of glass to be incorporated and thus remove the need for any glazing bars. Alternatively, this design can also be chosen along with slim 20mm horizontal glazing bars above and below the floating lock, the choice is yours.



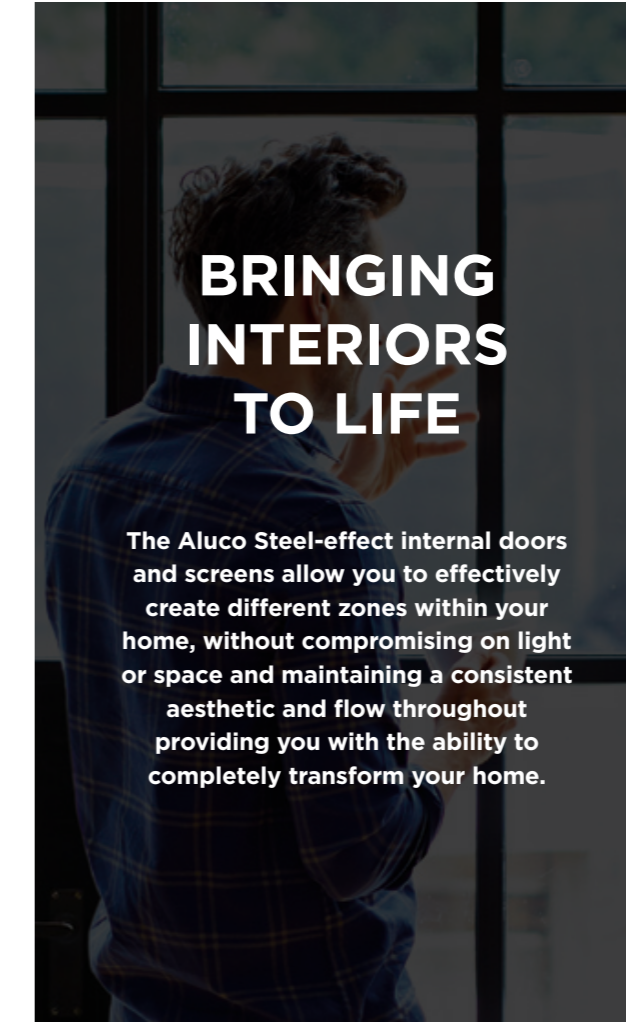
# THE ALUCO INTERIOR & EXTERIOR SYSTEM

## Thoughtful Liveable Spaces

The Aluco Interior & Exterior range allows a multitude of style options to be created, all to suit your interior and exterior needs whilst maintaining the 'classic' steel look appearance.

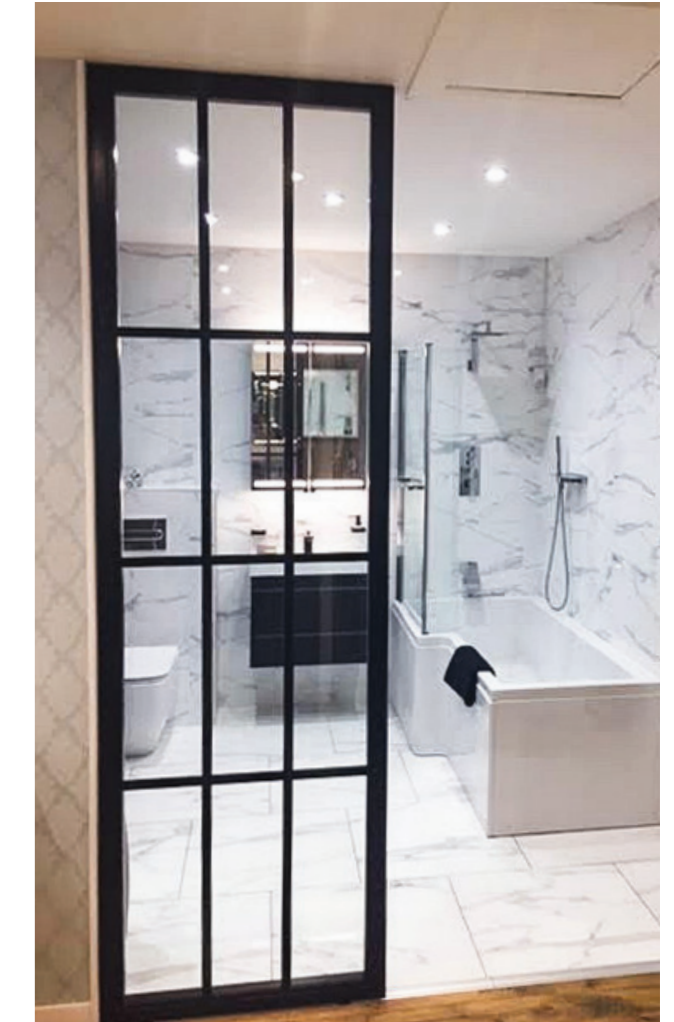
From screens, doors, side partitions, orangery windows and so much more. Not forgetting internal doors too, all internal doors have no bottom frame allowing your floors to seamlessly flow through the room, be it hallway, kitchen, bedroom and bathroom.

Our steel look Aluco Interior & Exterior range is only restricted by your imagination.



## BRINGING INTERIORS TO LIFE

The Aluco Steel-effect internal doors and screens allow you to effectively create different zones within your home, without compromising on light or space and maintaining a consistent aesthetic and flow throughout providing you with the ability to completely transform your home.







# IT'S THE INSIDE THAT COUNTS

## Bring Interiors To Life

The Aluco interior doors and screens will enhance any home, with classic details like handle back plates, bottom kick plates, slim horizontal and vertical glazing bars, rose back plate handles as well as the bespoke Floating Lock. All these go to provide you with the iconic industrial finish, available as single and double glazed options.



SLEEK  
INNOVATIVE  
CLASSIC  
STATEMENT  
ELEGANT

ALUCO™  
Steel Look Collection

ALUCO STEEL LOOK

BI-FOLDING  
DOORS





# ALUCO

TURNING YOUR  
DREAMS  
INTO REALITY

## Versatile Design, Enduring Appeal

Our Bi-Folding door is also available in an ultra-slim version, reducing sightlines and delivering maximum light. To compliment our signature, steel-effect windows and doors we also offer a steel look option which can transform traditional bi-folding doors to include the iconic grid-like glazing bars.



# ALUCO EXTERIOR STEEL LOOK COLLECTION

The Aluco steel look system uses modern high performing materials to create traditional steel look style doors, screens, partitions and windows. Delivering classic industrial finish products with slim sightlines, to provide maximum natural light whilst delivering thermal, security and weathering performance.



## Key Features

- Fully crimped and glued corner joints for strength and weather sealing.
- Range of shapes, raked and arched windows, doors and screens
- Very slim sightlines to maximise glass area and light
- Powder coated paint for durability and quality. Available in a range of smooth and textured finishes
- 28mm warm edge, argon filled double glazed units to all products. Doors and side screens toughened safety glass as standard
- Security multi-point locking to all windows and doors, designed specifically for steel look products
- Thermally broken profiles for enhanced energy performance
- Toughened single glazed option for all internal, doors, screens and partitions
- No threshold on internal doors for seamless flow of floor covering
- Bespoke hand crafted manufacturing of all products in the UK

## Check List

Thermal broken powder coated steel look frames

Aluco  Steel

28mm double glazed and single glazed options

Aluco  Steel

Multi-point security locking to all windows and doors

Aluco  Steel

Comprehensive shaped frame options

Aluco  Steel

Interior and exterior door, screen, partition and window configurations

Aluco  Steel

Equal glass sightlines for all products

Aluco  Steel

Range of furniture styles and options

Aluco  Steel

Air, water and wind resistance to 300Pa, 600Pa and 2400Pa respectively

Aluco  Steel

Manufactured in the UK

Aluco  Steel

# ALUCO INTERIOR STEEL LOOK COLLECTION

The Aluco steel look interior system is a unique bespoke design, created to give you a traditional steel look style of doors, screens and partitions. Delivering classic industrial finish products with slim sightlines, to provide maximum natural light whilst delivering stylish design and practical design choice for any room or lifestyle.



## Key Features

- Powder coated solid chambered aluminium extrusion with no thermal break
- Flush 150mm wide lock body
- Circular back-plate escutcheon handle ranges
- Lock with one piece keep
- Deep bottom rail
- Slim 37mm transom
- Flush bottom sash with double woolpile seal
- 4mm toughened glass as standard
- Minimum 4 No slim knuckle hinges
- Q-lon perimeter door seal
- All corner joints glued and crimped

## Check List

Solid aluminium chambered profile

Aluco  Steel

150mm wide flush lock body

Aluco  Steel

Circular backplate to handle and bathroom locks

Aluco  Steel

Lock with adjustable tension and dust pocket tidy to keep

Aluco  Steel

150mm one piece - flush deep bottom rail

Aluco  Steel

Suited door and sidelight transoms

Aluco  Steel

Flush bottom sash with double woolpile seal

Aluco  Steel

4mm toughened glass as standard

Aluco  Steel

Minimum number of 4 slim hinges, traditionally fitted with 2 at the top for greater strength

Aluco  Steel

Q-lon perimeter seal for quiet soft closing action

Aluco  Steel

Double crimped and glued corner for added strength and durability

Aluco  Steel

# ALUCO INTERIOR SLIDING DOORS

Designed to perfectly suit with the Aluco Interior Door & Screen System. Offering a classic industrial finish with wide lock body, deep bottom rail and slim transom bars, the classic art deco steel look finish. Providing an alternative design choice to any room.



## Key Features

- Powder coated solid chambered aluminium extrusion with no thermal break
- Flush 150mm wide lock body
- Flush recessed handle range
- Deep bottom rail
- One piece head track
- 4mm toughened glass as standard
- Slim 37mm transom
- 20mm Astragal Bar
- All corner joints glued and crimped

## Check List

Solid aluminium chambered profile

Aluco  Steel

150mm wide flush lock body

Aluco  Steel

Flush recessed handle design for easy operation and classic styling

Aluco  Steel

150mm one piece - flush deep bottom rail

Aluco  Steel

One piece soft close header track for smooth operation

Aluco  Steel

4mm toughened glass as standard

Aluco  Steel

Slim door and sidelight matching transoms

Aluco  Steel

Option of 20mm slim Astragal Bar for further design options

Aluco  Steel

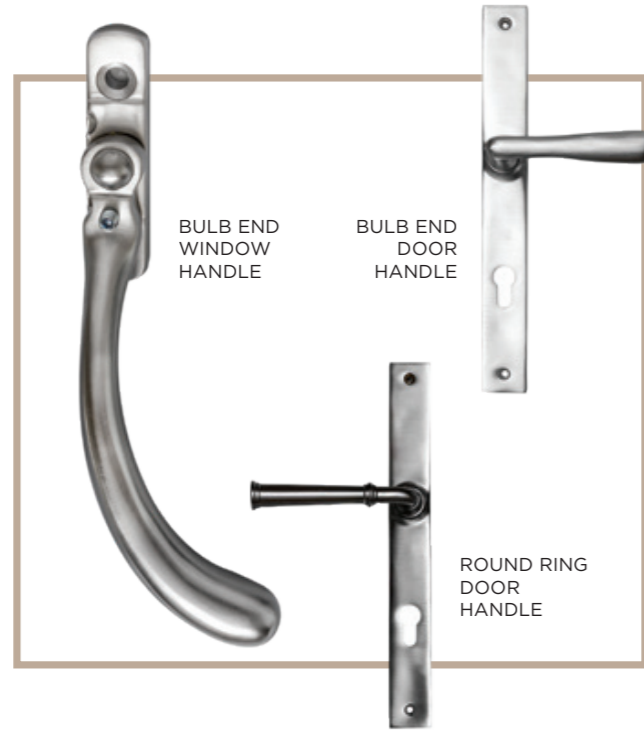
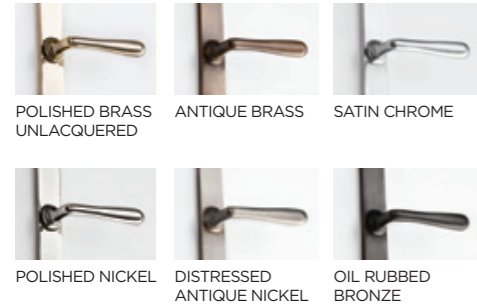
Double crimped and glued corner for added strength and durability

Aluco  Steel

# EXTERIOR STEEL LOOK FURNITURE

## Traditional Range

The traditional range of window and door handles are available in a choice of Bulb and Round Ring designs and are all available in a range of 6 finishes. All furniture options are perfectly suited, so window and door options will match perfectly.



## Aluco Steel Look Window Handle

Replicates the appearance of a traditional cockspur handle and perfectly compliments the steel look window design. Available in:

- SATIN CHROME
- GUNMETAL
- ANTIQUE BLACK
- DARK BRONZE



## Art Deco Range

For that truly Art Deco suit, this range of suited window and door handles are available in black and solid brass for a spectacular finish to your windows and doors.



## Ventiss Range

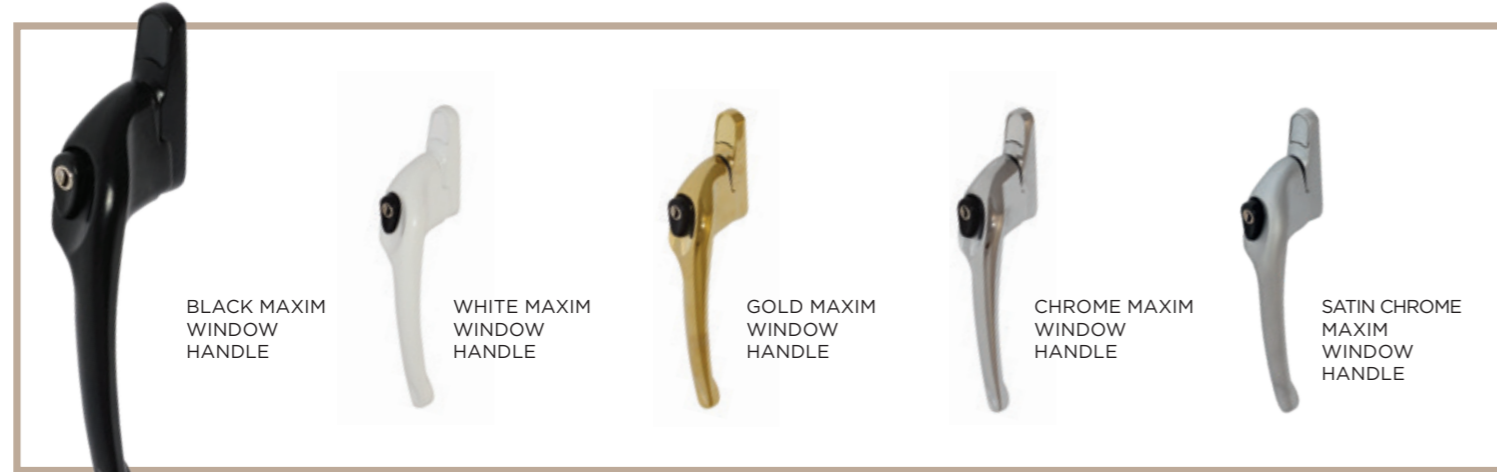
The Ventiss range of window handles offers a multitude of contemporary handle designs and colour combinations, the 360 and Teardrop designs.



# EXTERIOR COLLECTION FURNITURE

## Window & Door Range

The range of standard window and door handles are both available in colour matched white, black, gold and chrome finishes. Standard on all Exterior steel look window and doors.



# BI-FOLDING DOOR FURNITURE



## LEVER HANDLE

For all Bi-fold master doors, the lever handle is provided for use with all main traffic opening doors. Available in:

- BLACK
- WHITE
- GOLD
- CHROME
- ANTHRACITE GREY



## SHOOTBOLT HANDLE

A slim neat design incorporated with all locking hinges opening doors. Available in:

- BLACK
- WHITE
- CHROME
- ANTHRACITE GREY



## D HANDLE

Where a hinge opening requires an easy to close door, the D handle is neatly incorporated within the centre hinge. Available in:

- BLACK
- WHITE
- CHROME
- ANTHRACITE GREY



# INTERIOR STEEL LOOK FURNITURE

## Single & Double Door Range

- 50 x 8mm circular Rose
- Lever handle with separate bathroom escutcheon
- Sprung handle
- Black, Satin Chrome & Antique Brass finishes.



## Floor Mounted Door Stop

- 45mm diameter
- Concealed-fix
- Satin Chrome & Chrome finishes.



# INTERIOR STEEL LOOK FURNITURE

## Sliding Door Handle

- Rectangular recess pull
- Flush fitting
- Black, Satin Chrome, Antique Brass finishes.



# ALUCO COLLECTION COLOUR

Other colour finish options are available upon request.



Black  
RAL 9005 Matt

# COLOURS THAT INSPIRE

## FOR THE ALUCO EXTERIOR COLLECTION

### Statement

An exclusive range of metallic finishes that combine with a unique tactile finish, bringing style and durability to any building project



### Heritage

The classic shades and warm tones in our Heritage range have been developed to provide the perfect finish for both new-build and heritage properties alike



### Classic

These beautiful colour-rich coatings, in a variety of versatile shades, the ever popular 'Classic' range offers style and protection for all your Aluco windows and doors.

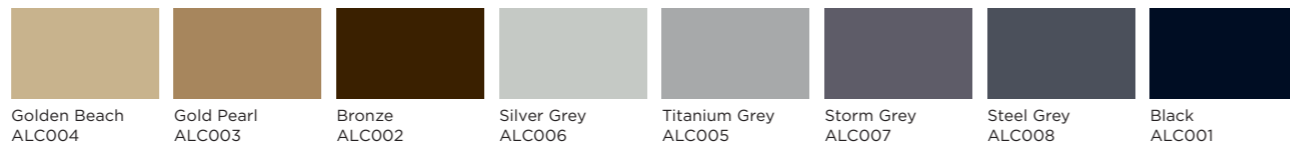


### Most Popular Aluco Exterior Colours



### Luxe

Luxe combines the best of anodised and powder coated finishes



Having selected the finish for your project, simply speak to your supplier and they will arrange for a sample to be sent to you. Although the colours in this brochure are a very accurate representation, they are not 100% accurate.

# The ALUCO Experience

The first step in your journey is to visit one of our Aluco certified partner showrooms. See for yourself the exceptional quality and design of our window and door collection, discover our range of finishing touches and discuss your project with an experienced designer.

When you choose a product from the Aluco Collection you're choosing more than just a supplier, you're choosing dedicated team, unrivalled product performance and an unsurpassed passion for quality.

Contact us to put you in touch with your Local Certified Showroom Partner  
**T: 01480 436578**  
**E: info@aluco.co.uk**

Follow us on Instagram & Facebook



@alucoaluminium



@AlucoAluminiumLtd







# ALUCO™

## Steel Look Collection

(t) 01873 877670 (e) [sakes@heronhurst.co.uk](mailto:sakes@heronhurst.co.uk)

 @heronhurst

[www.heronhurst.co.uk](http://www.heronhurst.co.uk)